



What is a **F**ixed **B**ase **O**perator?

Lesson flow:

- What do they provide
- Parking options -> *when/why use an FBO?*
- Preparation?
- Arrival & practical experience

Fixed Base Operator

These guys want to sell you something. They provide:

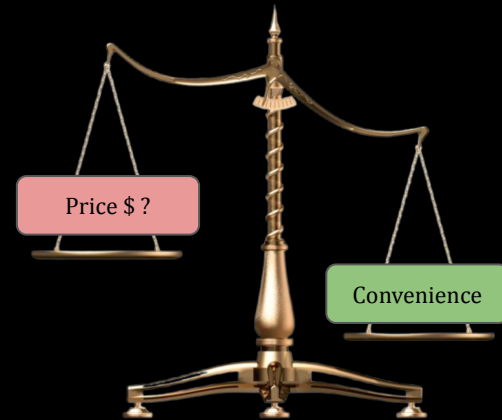
- Fuel
- Parking area while you are away from the airport
 - (visiting city?)
- Restrooms

- Rental car or Crew Car?
 - **Rental Car** = you pay for it per/hour
 - Good for long excursions
 - **Crew Car** = *(not always available)* free car for crew (pilot) to drive around.
 - Usually only available for a couple hours max.
 - Good for short excursions



All Airports & FBOs are different. **Some FBOs have fees**. You may find...

Landing / Ramp fee -> just to land or park, you must pay
Facility fee -> just to use the FBO, you must pay
Handling fee -> FBO marshalling & tugging, therefore you must pay
After Hours fee -> if you ask FBO to stay open late after they are supposed to close, you must pay
Sometimes: "Fees waived with fuel purchase" -> No fees if you buy fuel! :-)



Arrival at an unfamiliar airport



Imagine you fly to an unfamiliar airport, and you'd like to exit the airport and see the city.

1. where will I park?
2. where will I get fuel?
3. where is the door to exit the airport?

Every airport is different. Usually you have a few options.

Where will I park?

Pilot can choose . .

Transient Parking

(parking in a designated parking area. No FBO's. Just tie your plane down).

https://www.aerotoons.com/blog/tiedown_knots.html

<https://rosap.ntl.bts.gov/view/dot/70980>

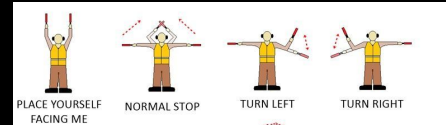
Here is the transient parking at 308. Nothing fancy, just an empty space:



Fixed Base Operator Parking

Parking at a mini terminal-like building.

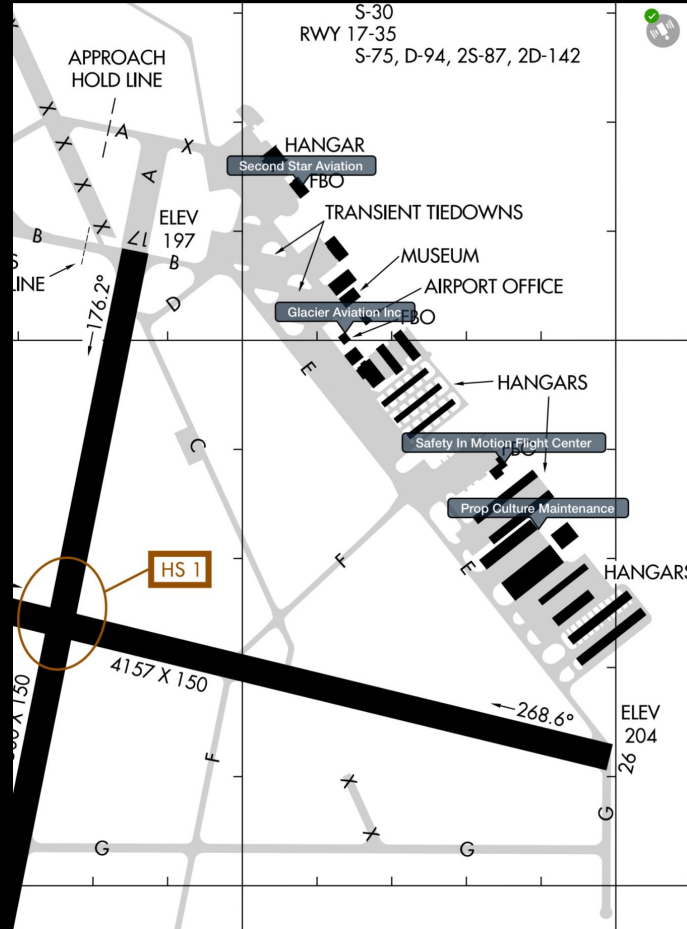
- Sometimes you will be martialed in (big FBO)



- Tiedowns and chocks usually provided
- Overnight hanger maybe available *avoid frost! :-)*
- FBO building = easy access for you & passengers to enter / exit the airport



Where will I park?



At **KOLM** you can choose between many different FBO's **OR** the transient parking.

Transient parking is likely cheaper (free *maybe**). BUT doesn't have convenient fuel services

FBOs might involve fees (depending on which one you choose) and have convenient amenities. . .

Where will I get fuel?

Pilot can choose. . .

Self Service



- You refuel the airplane *yourself*.

Watch this video:

www.youtube.com/watch?v=BNdCLsj14kA&pp=vgUec3BvcnR5cyBob3cgdG8gcmVmdWVsiGFpcnBsYW510gcjCOMLAYcqIYzv



Full Service

- Often available at FBOs
- *FBO employee* refuels the airplane *for you!*
 - Convenient!

Fuel may cost slightly more per-gallon



Where will I exit the airport? *And how do my passengers enter the airport?*

Pilot can choose*...

Airport Gate*

pilot-accessible *only at quite small airports.*

(medium & large airports, you probably need to use FBO)

Airport security is **very critical**, because of this, access is limited & sensitive. Only very small airports have simple gates with codes.

*May not be accessible to general public!!!!



FBO

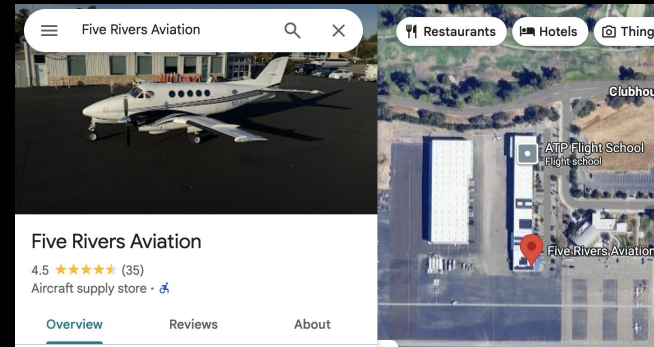
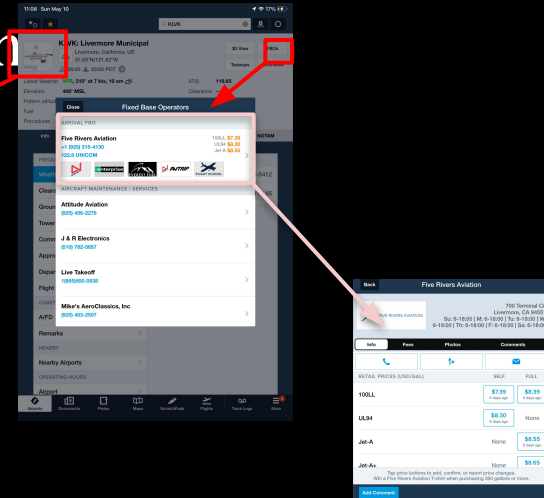
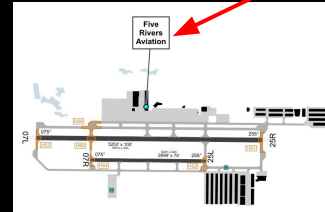
- FBO has a street-address, so you can find it on google maps!
- FBOs have doors to enter/exit the airport
- Have security!

This is the street-side view of Atlantic Aviation at KEUG.



Fixed Base Operator -> where to find information

- Foreflight
- Google maps / google earth
- Skyvector / airnav website
- Airport or FBO website?
- Youtube?
- Word-of-mouth (ask a fellow pilot!)



FBO, Fuel Providers, and Aircraft Ground Support				
Business Name	Contact	Services / Description	Fuel Prices	Comments
Five Rivers Aviation	925-315-4130 [web site] [email]	Aviation fuel, Aircraft ground handling, Oxygen service, Aircraft parking (ramp or tie-down), Hangars, Hangar leasing / sales, GPU / Power cart, ... 	AVFUEL 100LL UL94 Jet A not yet rated FS \$8.39 --- \$8.55 SS \$7.39 \$8.30 --- Updated 01-May-2026	I read write FS=Full service SS=Self service UPDATE PRICES
More info about Five Rivers Aviation				

Preparation

- How do I choose which FBO I will go to?
 - Fuel Prices?
 - Fees?
 - Services?
 - Reviews?
 - Taxi route convenience?

- *Where is the FBO? (foreflight + google maps)*
 - Foreflight shows “FBO Button” on airport diagram
 - You can use Google Maps & Google Earth to find the business address

- Do I need to call them ahead of time?
 - A **wise idea** if...
 - Staying a long time / overnight -> ask, “Do you have ramp space to accommodate this?”
 - Flying in with multiple planes
 - Require Passenger accommodations (car available?)
 - Any other questions? -> Ask early to respect their time and resources.

Etiquette

- Planning (complete)
- Arrival
 - If parking available and clear -> park
 - If unsure of where to park, **ASK!!** contact Unicom: Use professional manners, of course!
- Common questions the FBO will ask **YOU**:
 - “What is your turnaround time?” = how quickly would you like to depart?
 - “Do you need fuel (how much)?”
 - “Do you need a car?”
- If unsure of something, ask!
 - SNACKS sometimes available :-). Might need to BUY them, or might be COMPLEMENTARY (free)
- Departure
 - Ensure you completed fuel/fee payment.
 - Notify front desk if marshaller is needed
 - Return wheel chocks / cones neatly with FBO
 - Taxi to runup area to perform runup (not right in front of the FBO)

Pilot: “[FBO name here], Cessna 123 request parking”

FBO: “Last station calling [FBO name] say again?”

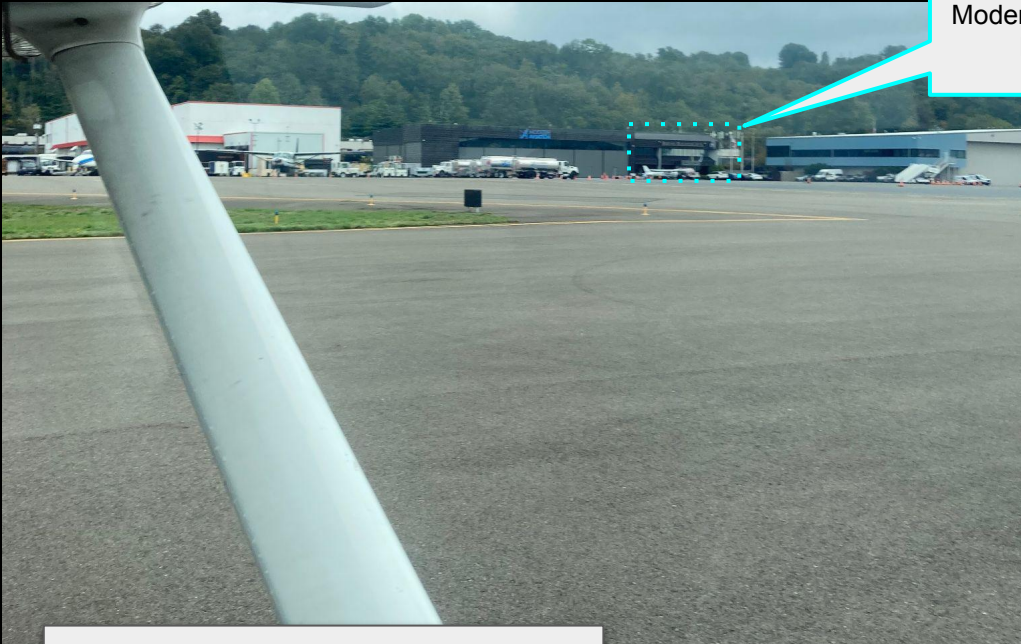
Pilot: “[FBO name here], Cessna 123 request parking”

FBO: “Cessna 123. Ok. We will send someone out”

Send someone out =
Sending a marshaller to
show you where to park



Inside the Fixed Base Operator



Modern Aviation
FBO

When the FBO ramp is complicated or busy (ex. KBFI). You can stop and contact UNICOM to request a marshaller to show you where to park. **Make sure you are not blocking a taxiway. Monitor ground to ensure you're not causing trouble!**

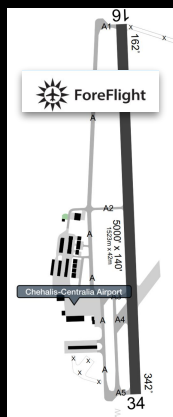


Some FBOs have donation boxes. It is common courtesy to leave a donation if you enjoy the complimentary snacks

KCLS FBO arrival



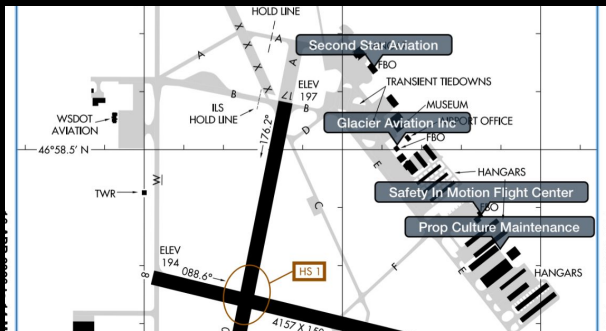
KCLS FBO arrival



KOLM *Safety In Motion* arrival



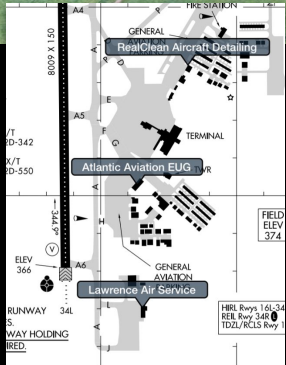
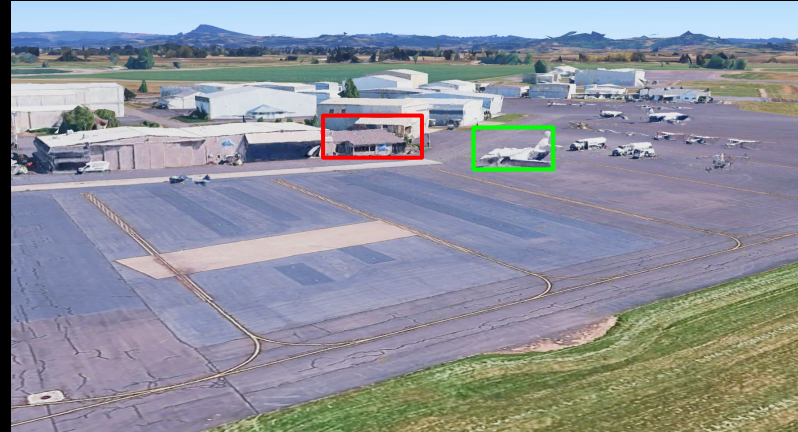
KOLM *Safety In Motion* arrival



KEUG *Atlantic Aviation* arrival



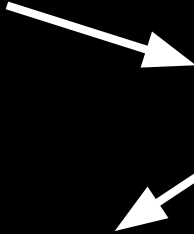
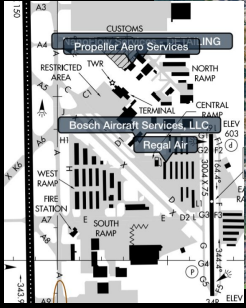
KEUG Atlantic Aviation arrival



KPAE *Propeller Aero Services*



KPAE *Propeller Aero Services*



KBFI *Modern Aviation*



KBFI Modern Aviation

