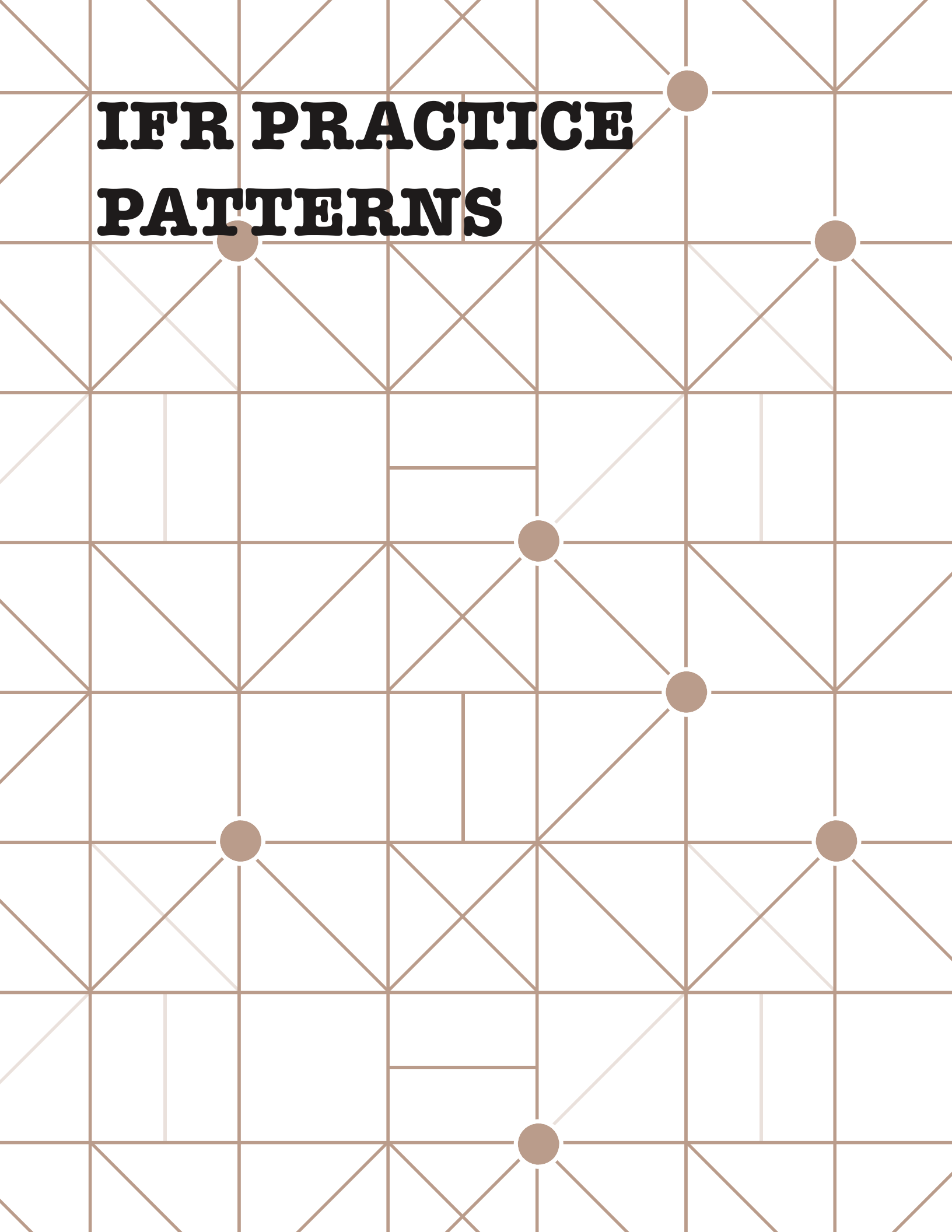
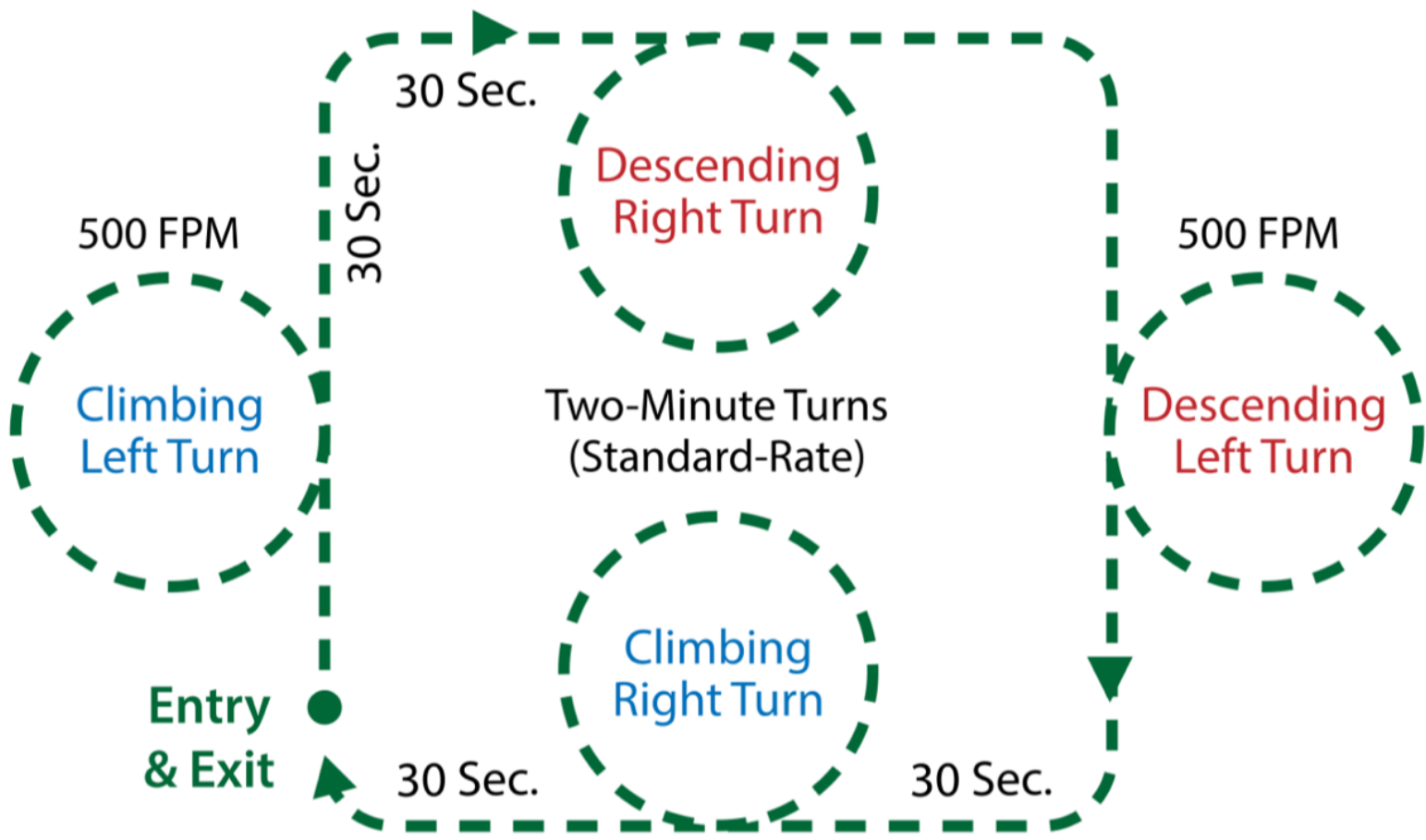


IFR PRACTICE PATTERNS





A

**LEVEL FLIGHT: Straight-and-Level;
Timed Turns (standard rate).**

NOTE
Initial square pattern should be based on cardinal headings, such as MH 360 or MH 270, and on an IFR-like altitude (4,200 MSL, etc.); later patterns can be based on headings such as MH 030, MH 135, MH 217, etc.

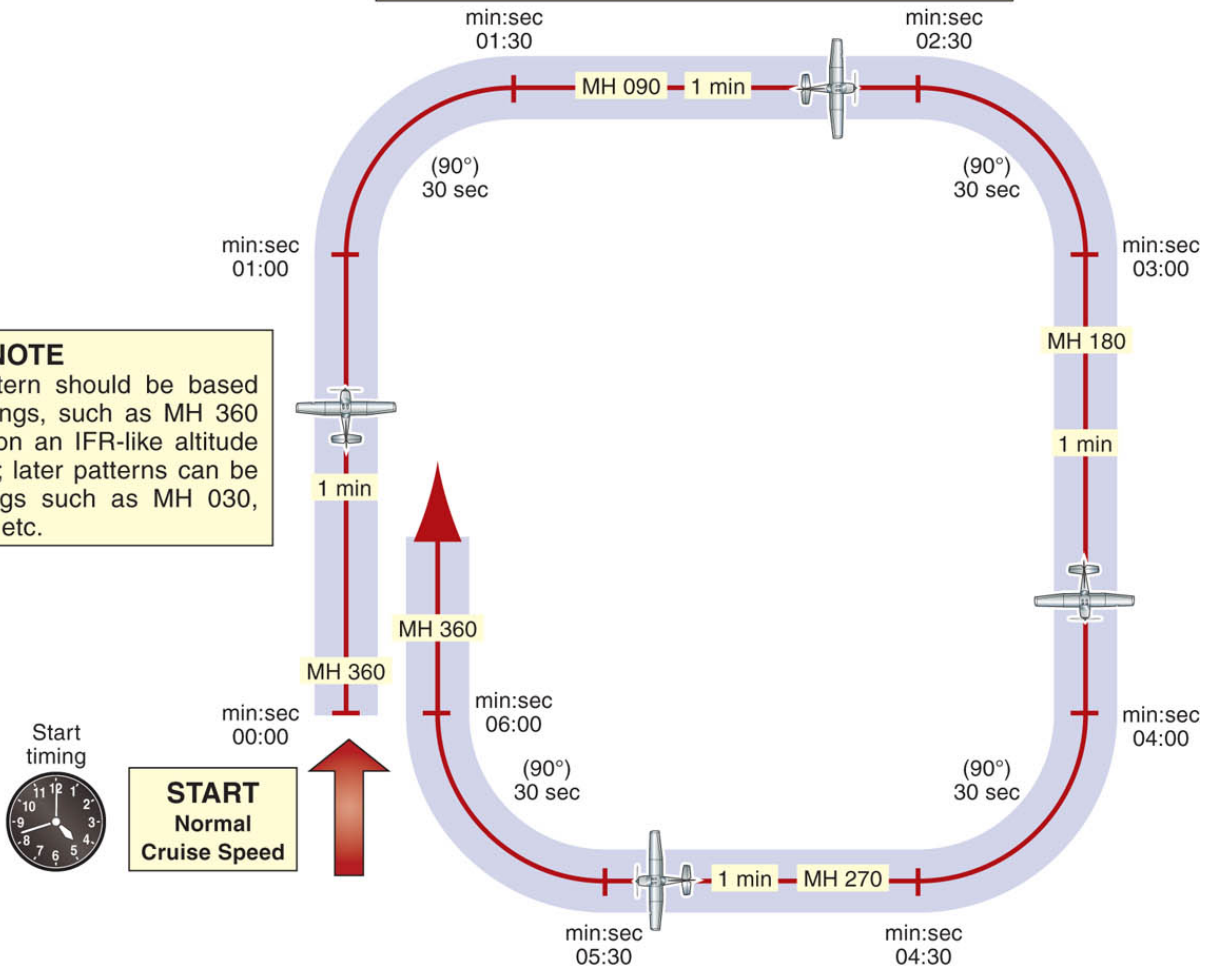


Figure 9-3. Pattern A.

B

**LEVEL FLIGHT: Straight-and-Level;
Timed Turns (standard rate);
Racetrack Holding Pattern.**

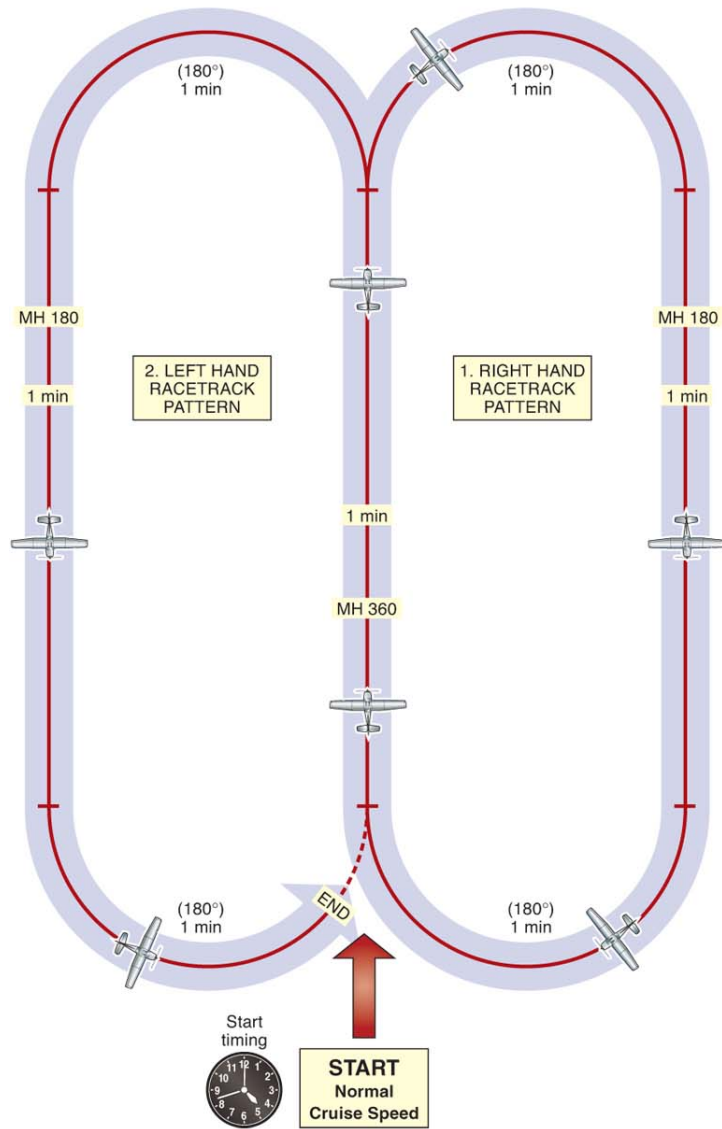


Figure 9-4. Pattern B.

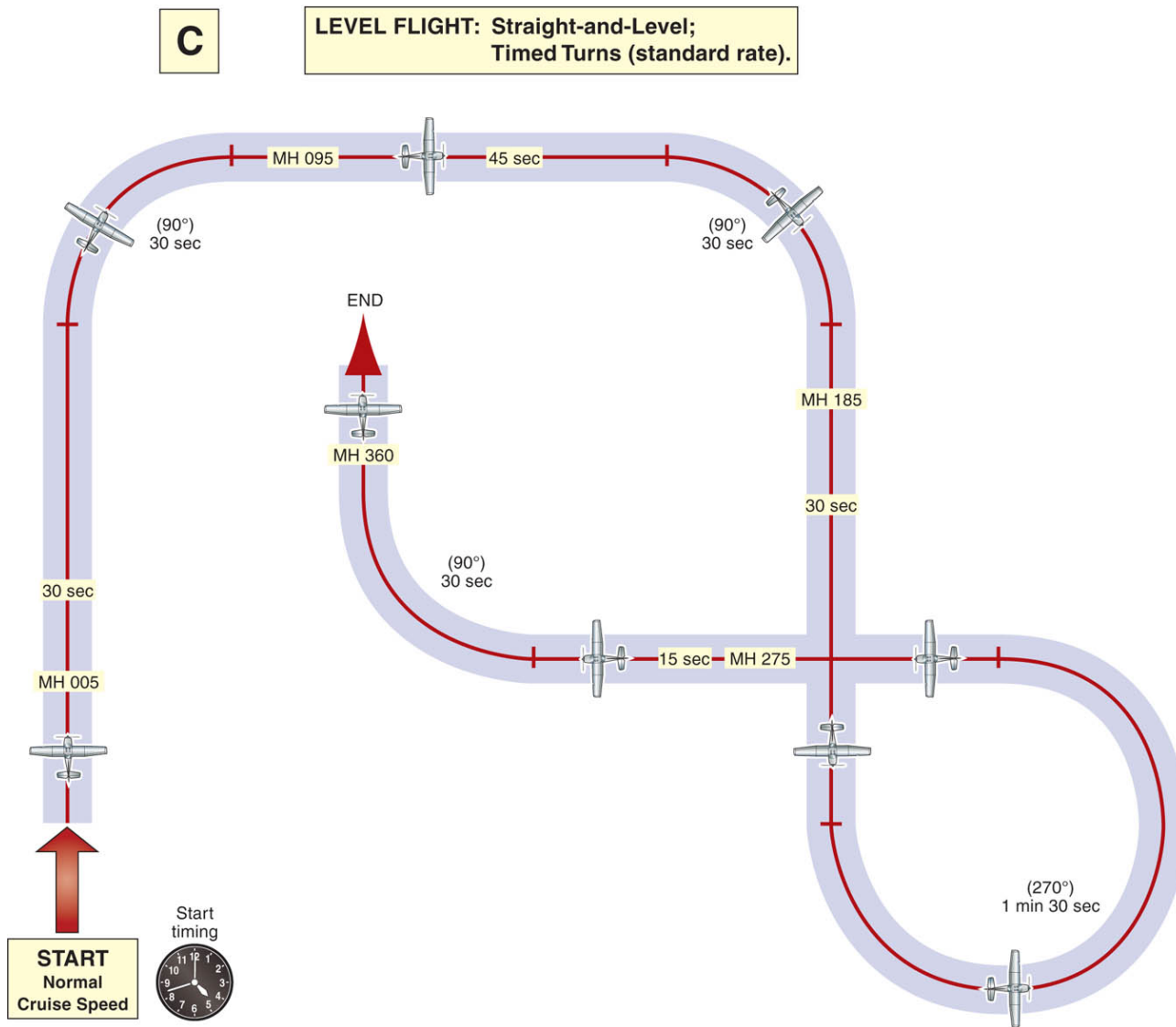


Figure 9-5. Pattern C.

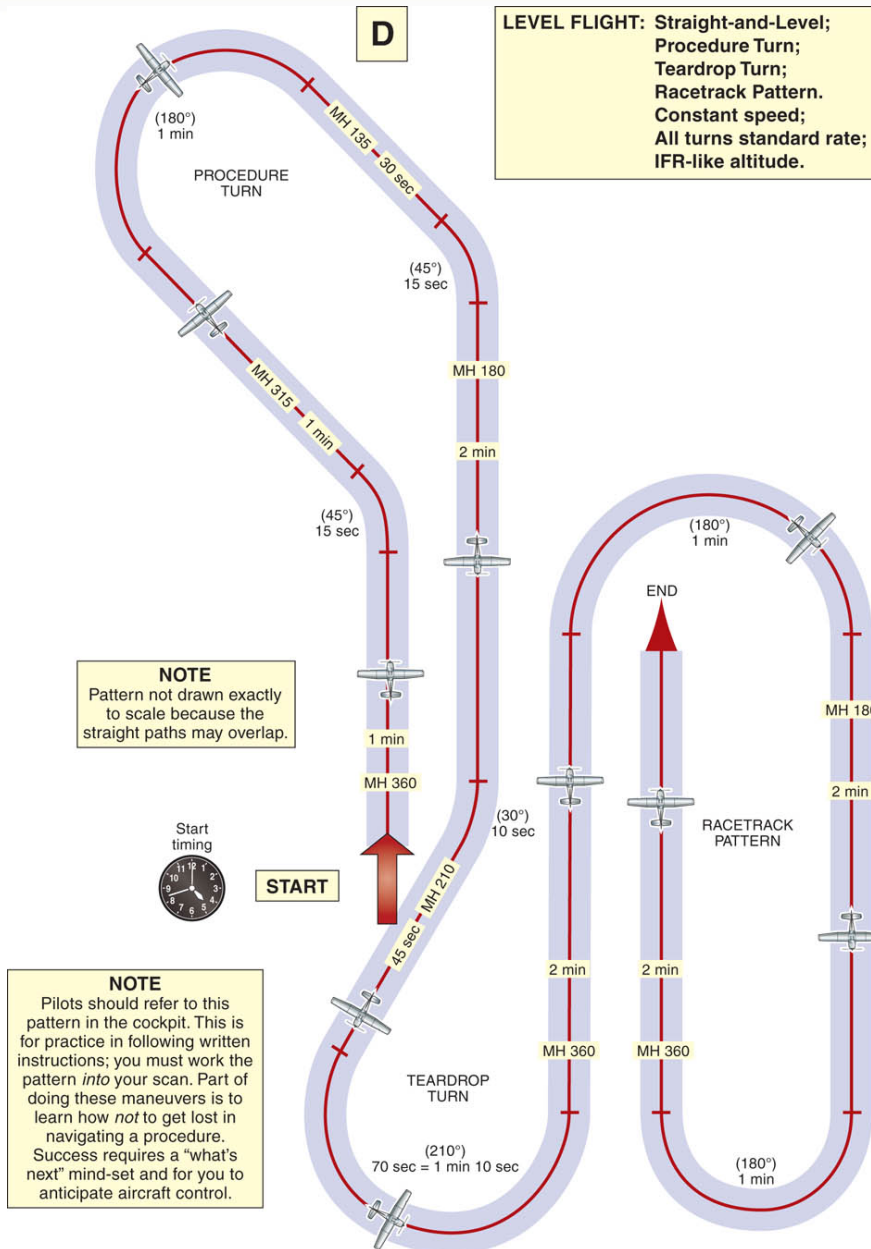


Figure 9-6. Pattern D.

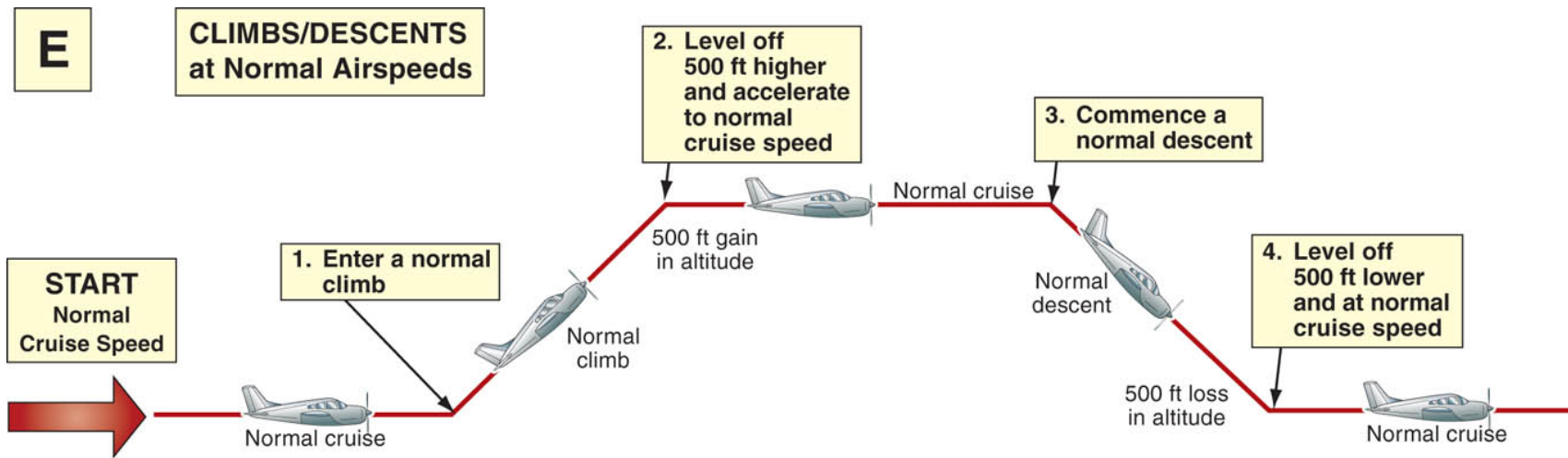


Figure 9-7. Pattern E.

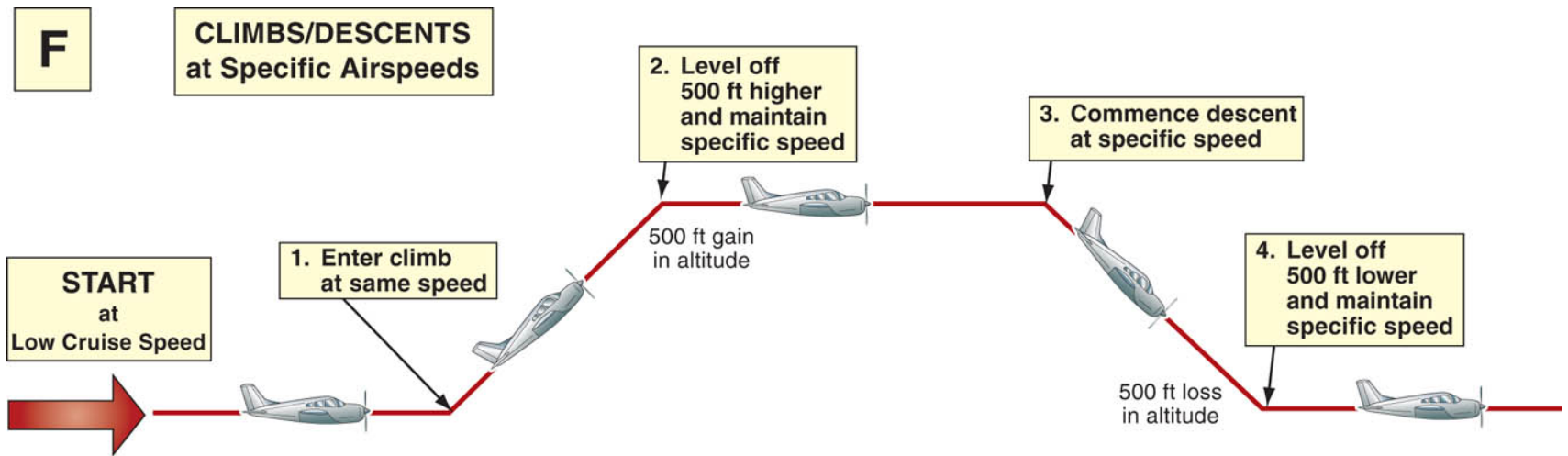


Figure 9-8. Pattern F.

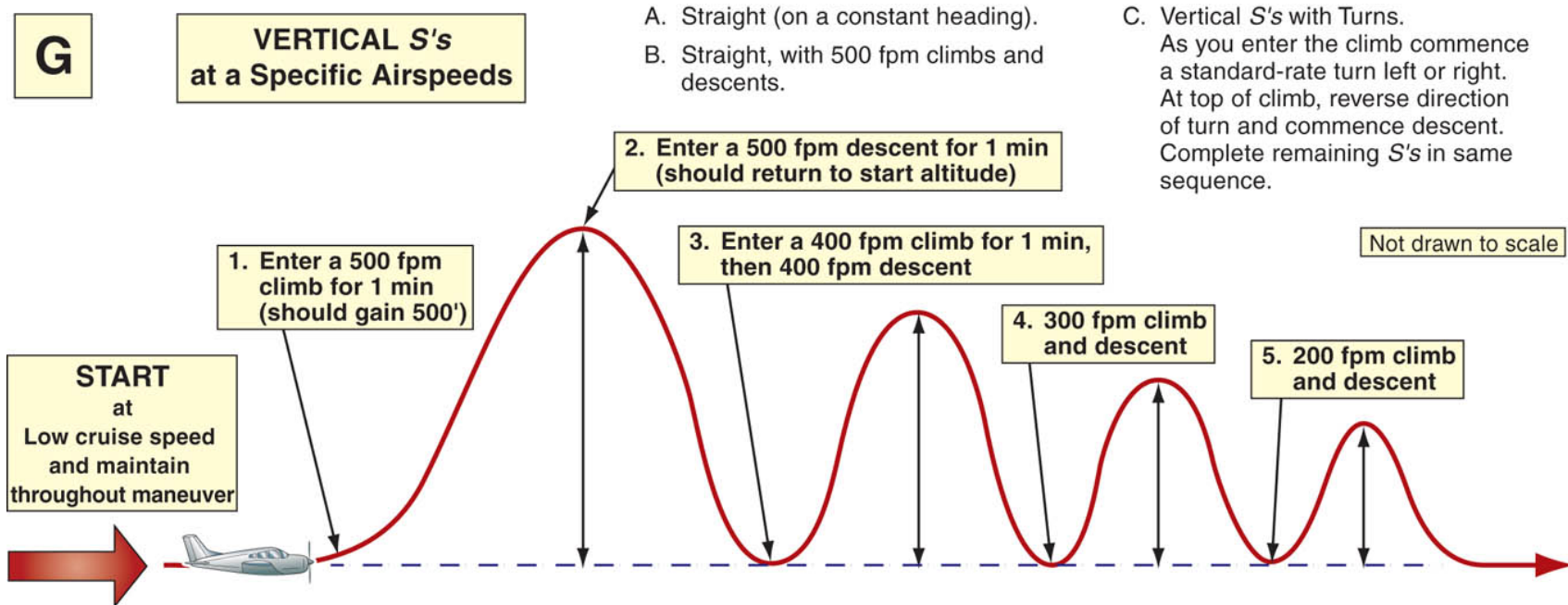


Figure 9-9. Pattern G.

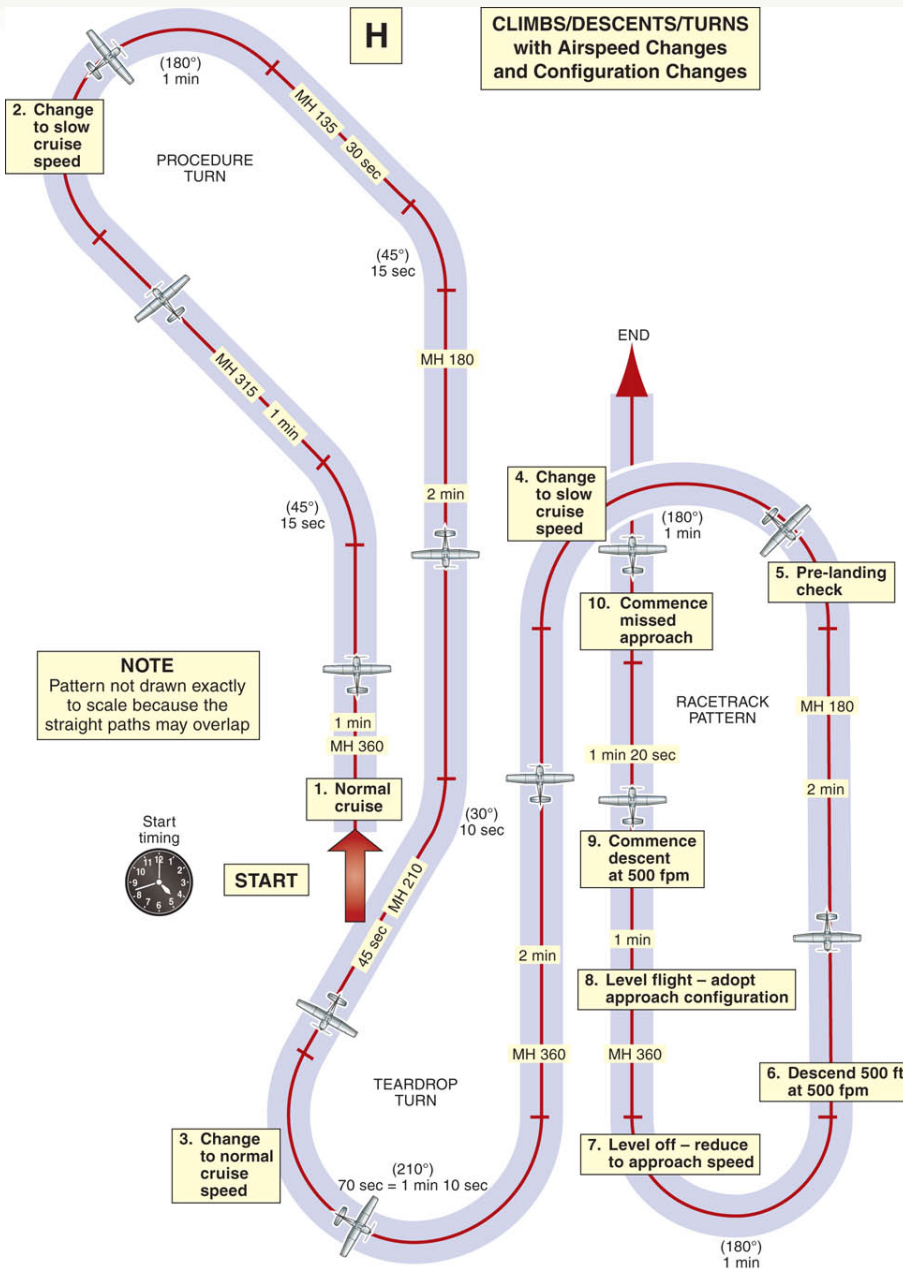


Figure 9-10. Pattern H.

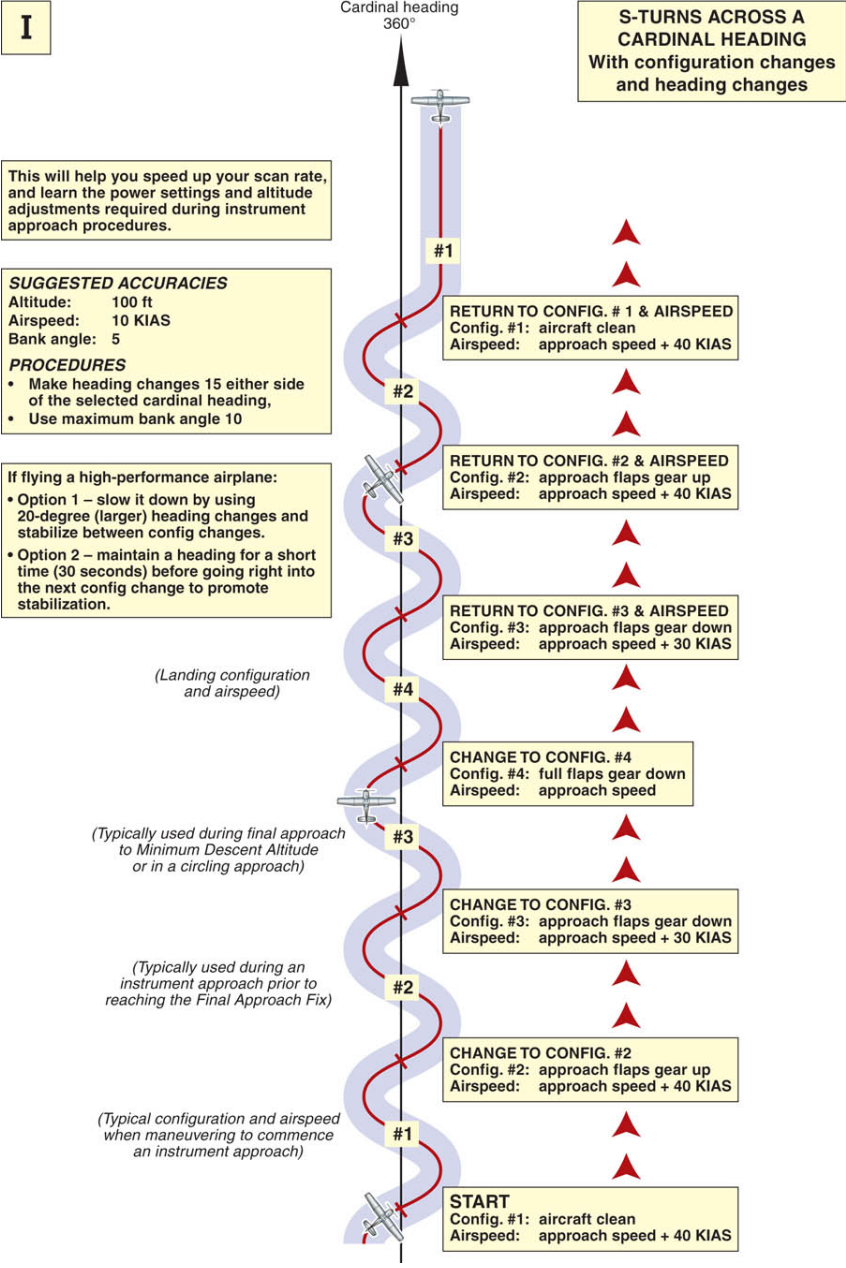


Figure 9-11. Pattern I.

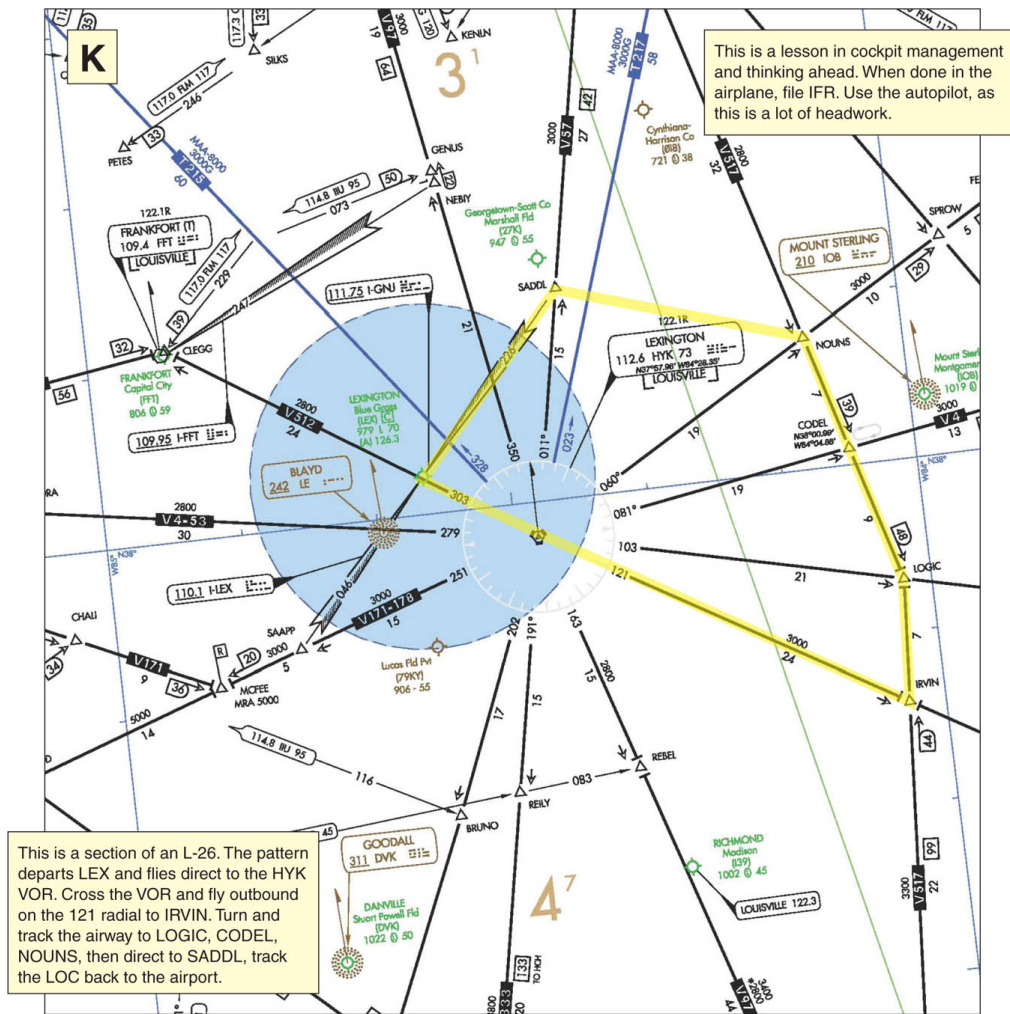
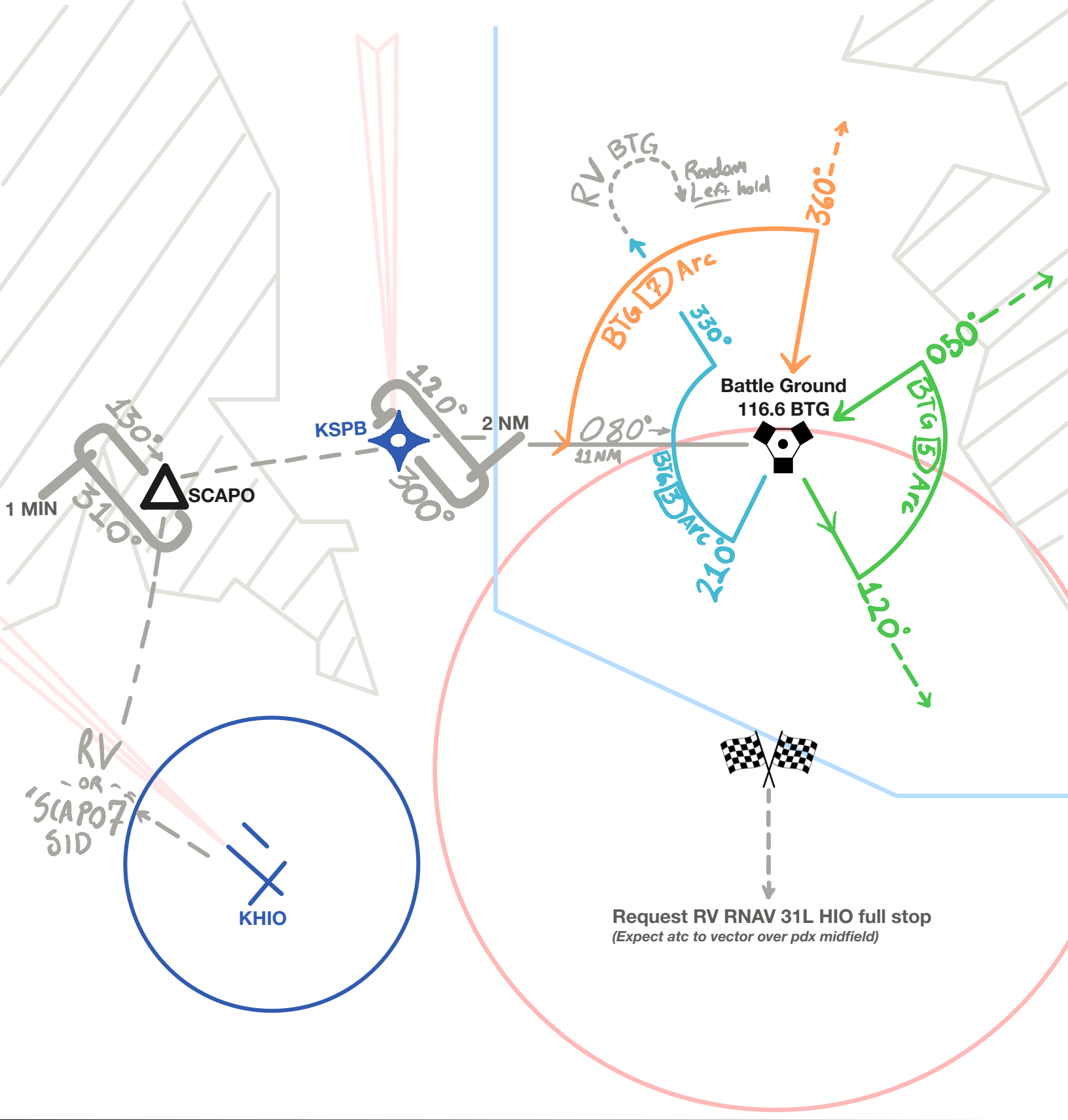


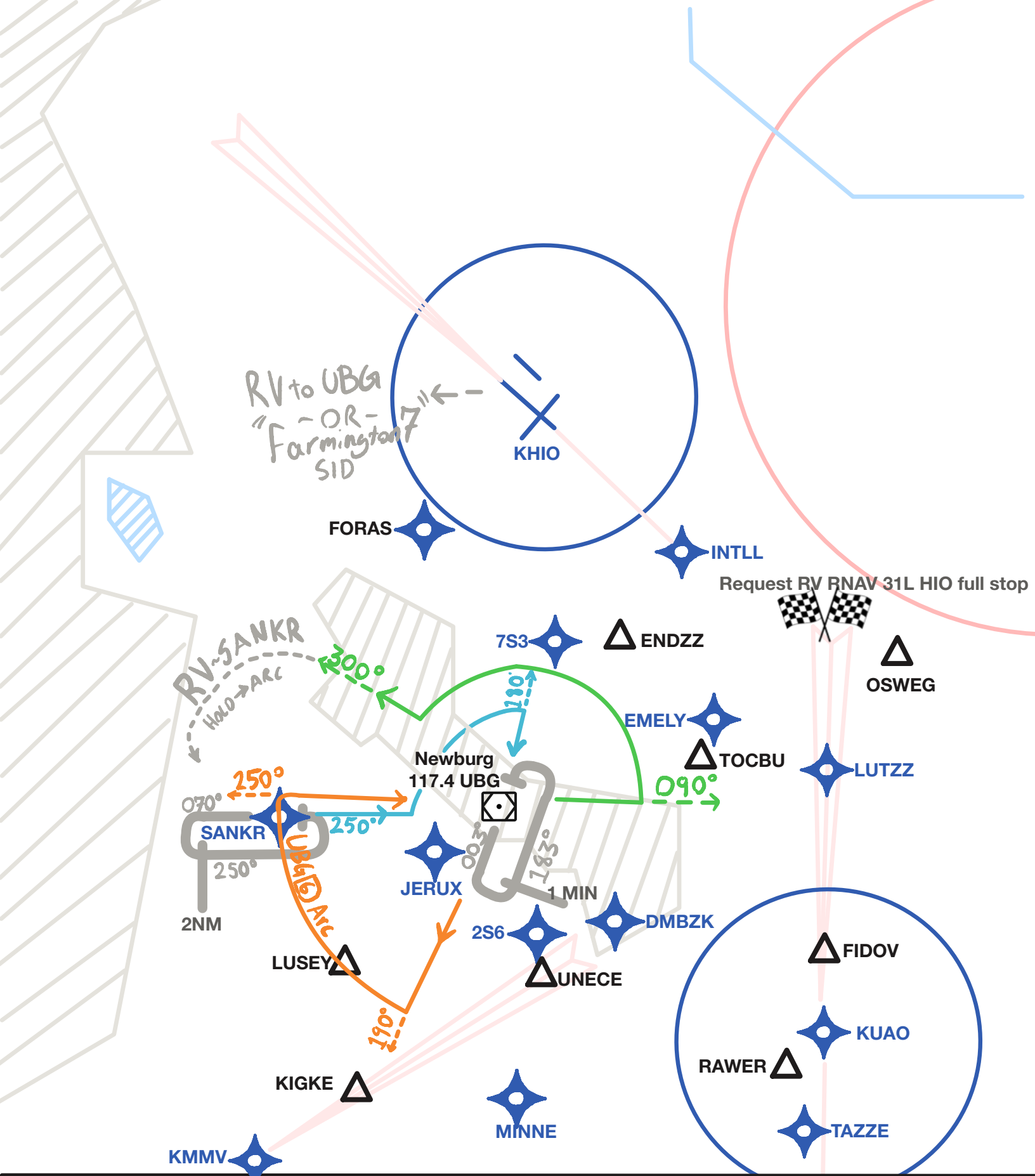
Figure 9-13. Pattern K, navigation and cockpit technology.



Approx. distance: 125NM

Estimated flight time: 1.5

Notes: **1,2,3**



Approx. distance: 100NM
 Estimated flight time: 1.3

Notes: 1, 2, 3